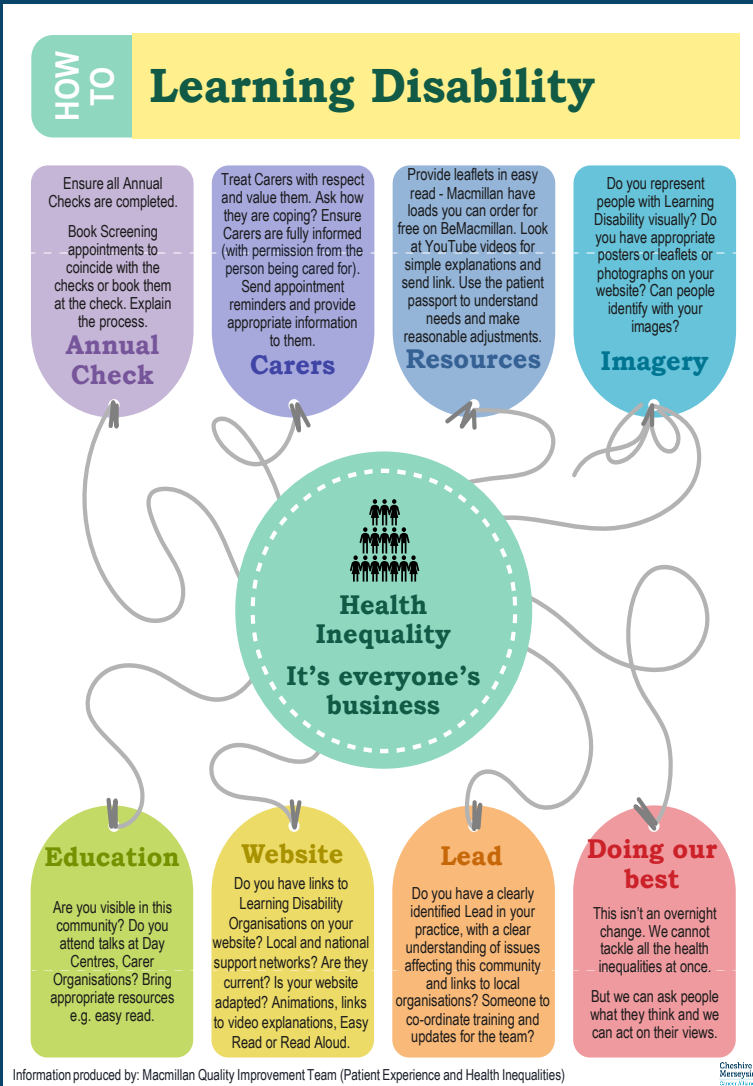


C&M Primary Care Networks Bulletin

July 2021

'Hold the date' PCN Webinar 20th October 2021 1:30pm to 3pm – We are currently in the process of planning our next CMCA PCN Webinar. If possible, please hold this date more information to follow.

We are seeking suggestions from PCN's for topics to cover in future webinars and/or volunteers to showcase PCN quality improvement work for learning and sharing purposes, please email ccf-tr.admin.cmca@nhs.net for further details



Health Inequalities

It's everyone's business

The CMCA health inequalities team have put together a 'How to' top tips on health inequalities.

The resources are for PCN's to use and share across the networks with the support from the available toolkit.

The toolkit covers, Learning Disabilities, Diverse Ethnicity, Deprivation, LGBTQ+, Disability & Carers. 9

We hope that this resource is a support in ensure every contact we make considers inequalities.

The full document for this resource can be found on the [CMCA Website](#)

Safety Netting

Safety netting has become increasingly important as patients become more complex and a greater number of investigations are undertaken in primary care. Safety netting also remains a key requirement of the cancer DES in Primary Care Networks and Early diagnosis QOF QI modules 21/22.

Practices MUST use the SNOMED code for 2ww referral safety netting. Practices can search for this code by putting 'Cancer Safety Netting' into their (READ) code browser and will find the code 123943100000107. **This is the only reporting/monitoring element of the DES. The correct code MUST be used.** Resources around safety netting can be found in the primary care resources section of the cancer alliance website. **Section 1: Referral Practice: Cheshire & Merseyside Cancer Alliance (canceralliance.nhs.uk)**

CMCA Primary Care/PCN Team



Dr Debbie Harvey



Louise Roberts Senior Quality Improvement Manager



Moray Hayman Project Manager – Early Detection & Prevention

To contact us please contact; ccf-tr.admin.cmca@nhs.net